



Первичная настройка коммутаторов серии MES24xx



Новые модели устройств в линейке



MES2410-08DP



MES2420B-24D



MES2420-48P



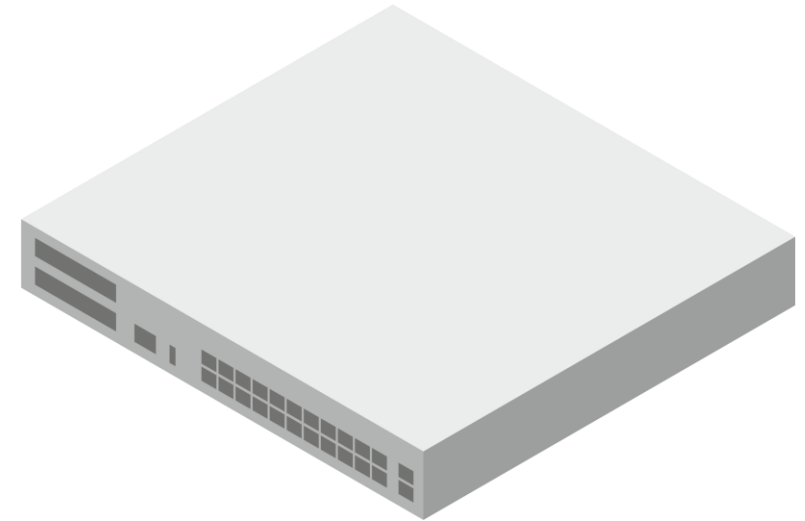
Базовая настройка



```
console#configure
console(config)#hostname MES2424
MES2424#clock set 09:18:00 10 july 2024
```

```
MES2424(config)#username user password user privilege 1
MES2424(config)#enable password level 15 godemode
```

```
MES2424(config)#banner exec Hello_user_Its_MES2424
```



Создание и назначение VLAN на интерфейс



```
MES2424(config)#vlan 10
MES2424(config-vlan)#name test
MES2424(config-vlan)#vlan active
```

```
MES2424(config)#interface vlan 10
MES2424(config-if)#ip address 10.10.10.2 /24
```

```
MES2424(config)#interface gigabitethernet 0/1
MES2424(config-if)#switchport mode access
MES2424(config-if)#switchport access vlan 10
MES2424(config)#exit
```

```
MES2424(config-if)#interface tengigabitethernet 0/1
MES2424(config-if)#switchport mode general
MES2424(config-if)#switchport general allowed vlan add 10
MES2424(config-if)#switchport general allowed vlan remove 10
MES2424(config-if)#switchport general allowed vlan none
```

```
MES2424(config-if)#interface tengigabitethernet 0/1
MES2424(config-if)#switchport mode trunk
MES2424(config-if)#switchport trunk native vlan 20
```

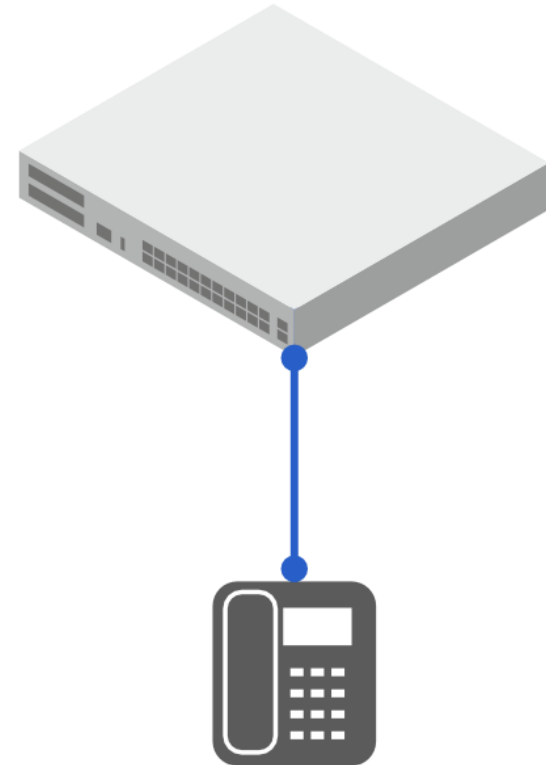


Voice VLAN



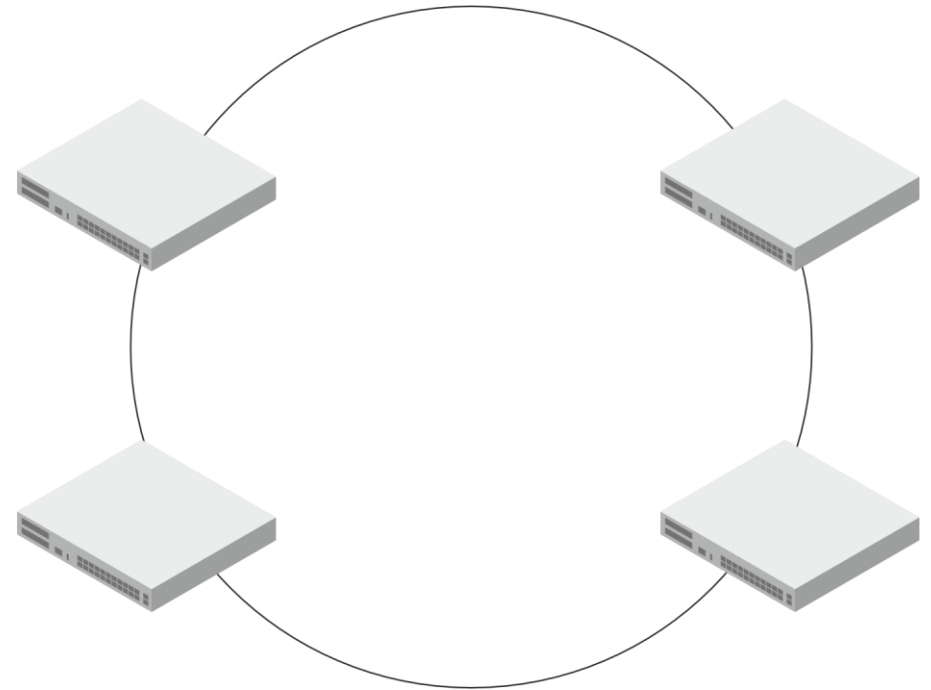
```
MES2424(config)voice vlan id 100  
MES2424(config)voice vlan oui-table add e4:5a:d4  
MES2424(config)set lldp enable  
MES2424(config)lldp transmit-interval 5
```

```
MES2424(config)interface gigabitethernet 0/3  
MES2424(config-if)switchport general allowed vlan add 10 untagged  
MES2424(config-if)switchport general pvid 10  
MES2424(config-if)switchport voice vlan  
MES2424(config-if)set lldp-med enable  
MES2424(config-if)lldp med-tlv-select med-capability  
MES2424(config-if)lldp med-tlv-select network-policy  
MES2424(config-if)lldp med-app-type voice vlan vlan-id 10 Priority 4 dscp 0
```



```
MES2424(config)#spanning-tree
MES2424(config)#spanning-tree mode rst
MES2424(config)#spanning-tree priority {0-61440}

MES2424(config-if)#spanning-tree cost {0-200000000}
MES2424(config-if)#spanning-tree disable
MES2424(config-if)#spanning-tree bpdupfilter enable
MES2424_2(config-if)#spanning-tree bpduguard enable
```

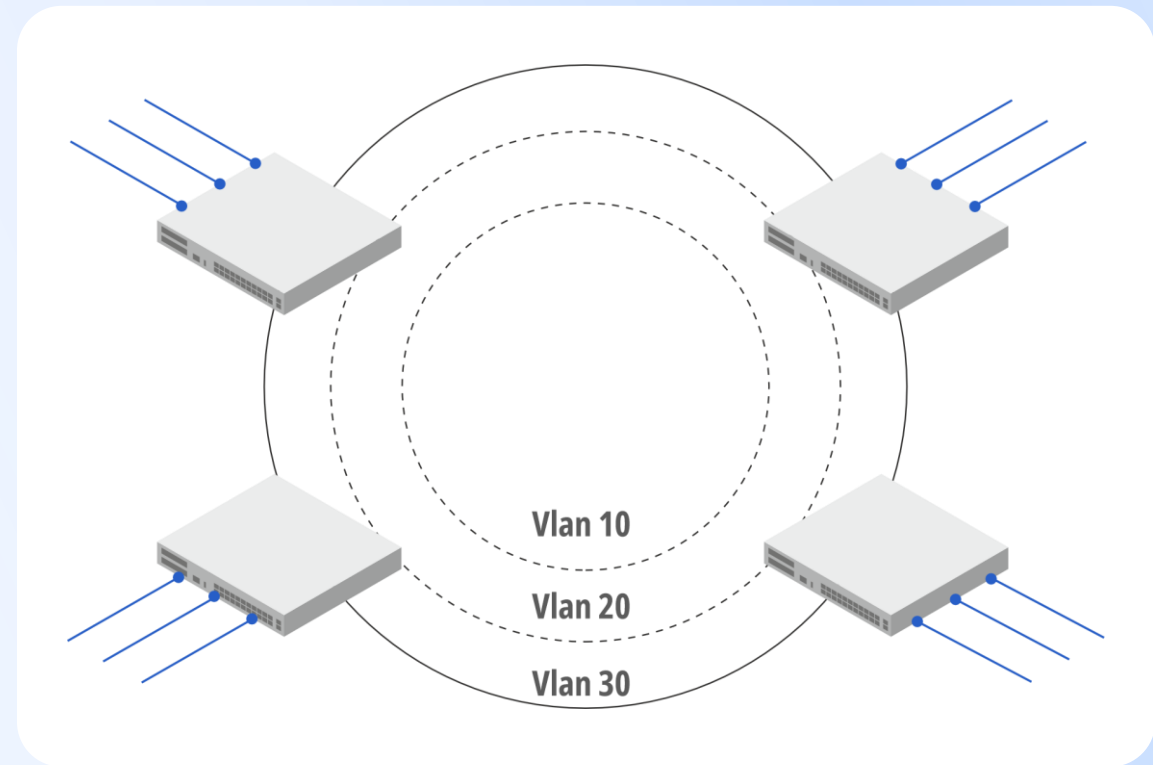


Rapid-PVST



```
MES2424(config)#spanning-tree
MES2424(config)#spanning-tree mode rapid-pvst
MES2424(config)#vlan 10-20
MES2424(config-vlan-range)#vlan active

MES2424(config)#vlan 10
MES2424(config-vlan)#spanning-tree priority 4096
```



Dot1x



```
MES2424(config)#vlan 100,200,1700  
MES2424(config-vlan)#vlan active
```

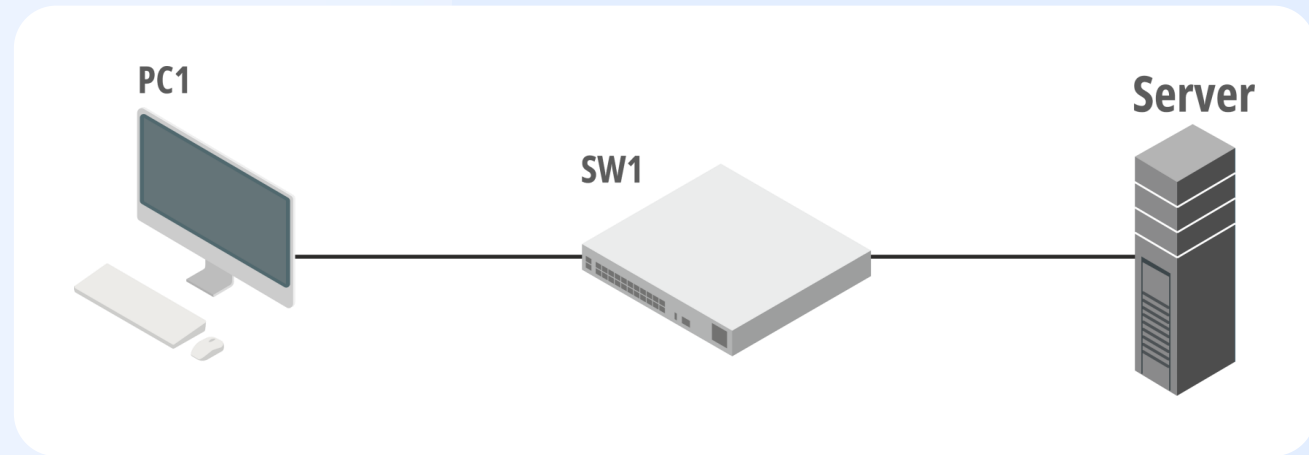
```
MES2424(config)#dot1x system-auth-control  
MES2424(config)#aaa authentication dot1x default group radius  
MES2424(config)#radius-server host 192.168.1.50 key test
```

```
MES2424(config)#interface vlan 100  
MES2424(config-if)#ip address 192.168.1.1 /24
```

```
MES2424(config)#interface vlan 1700  
MES2424(config-if)#ip address 170.170.170.1 /24
```

```
MES2424(config)#interface gigabitethernet 0/1  
MES2424(config-if)#switchport access vlan 100
```

```
MES2424(config)#interface gigabitethernet 0/48  
MES2424(config-if)#dot1x port-control auto  
MES2424(config-if)#dot1x reauthentication  
MES2424(config-if)#dot1x timeout reauth-period 300  
MES2424(config-if)#dot1x guest-vlan 200  
MES2424(config-if)#dot1x radius-attributes vlan optional  
MES2424(config-if)#switchport mode access
```



Storm Control



```
MES2424(config)#errdisable recovery cause storm-control
MES2424(config)#storm-control mode kbps
MES2424(config)#storm-control mode pps
MES2424(config)#errdisable recovery interval 30
```

```
MES2424(config)#interface gigabitethernet 0/1
MES2424(config-if)#storm-control broadcast level kbps 1024
MES2424(config-if)#storm-control broadcast action shutdown
```

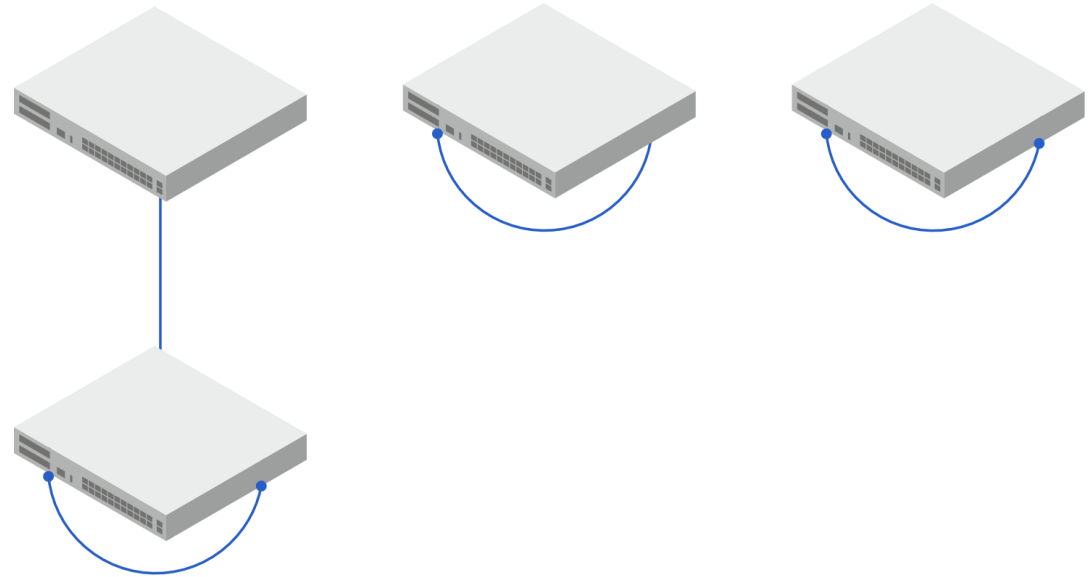
```
MES2424(config)#interface gigabitethernet 0/2
MES2424(config-if)#storm-control dlf action trap
MES2424(config-if)#storm-control dlf level pps 1000
```

```
MES2424(config)#interface gigabitethernet 0/3
MES2424(config-if)#storm-control multicast action trap-and-shutdown
MES2424(config-if)#storm-control multicast level pps 1000
```



```
MES2424(config)#loopback-detection enable  
MES2424(config)#errdisable recovery cause  
loopback-detection  
MES2424(config)#errdisable recovery interval 30
```

```
MES2424(config)#loopback-detection interval 1  
MES2424(config)#interface gigabitethernet 0/1  
MES2424(config-if)#loopback-detection enable
```



Port Security



```
MES2424(config)#no spanning-tree
MES2424(config)#interface gigabitethernet 0/1
MES2424(config-if)#switchport port-security enable
MES2424(config-if)#switchport port-security mode secure-permanent
MES2424(config-if)#switchport port-security mac-limit 10
MES2424(config-if)#switchport port-security violation discard-shutdown
```



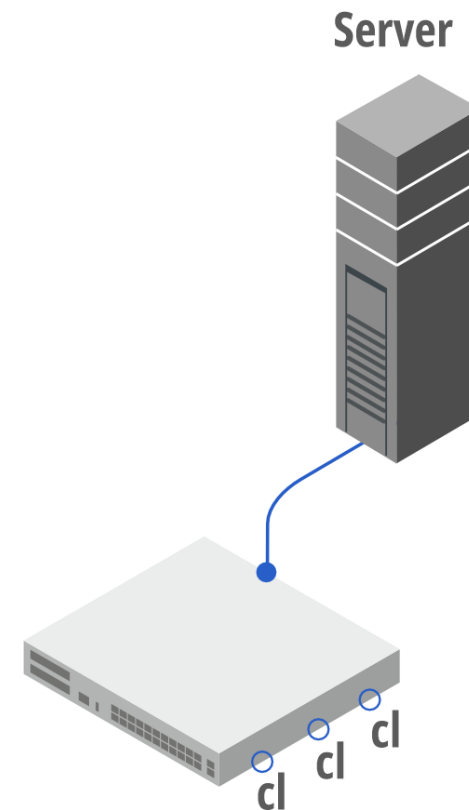
DHCP Snooping и IP Source Guard



```
MES2424(config)#ip dhcp snooping
MES2424(config)#vlan 100
MES2424(config-vlan)#vlan active
MES2424(config-vlan)#ip dhcp snooping
```

```
MES2424(config)#interface gigabitethernet 0/1
MES2424(config-if)#switchport mode access
MES2424(config-if)#switchport access vlan 100
MES2424(config-if)#ip verify source port-security
```

```
MES2424(config)#interface tengigabitethernet 0/1
MES2424(config-if)#switchport mode access
MES2424(config-if)#switchport access vlan 100
MES2424(config-if)#port-security-state trusted
MES2424(config-if)#set port-role uplink
```



Dynamic ARP inspection

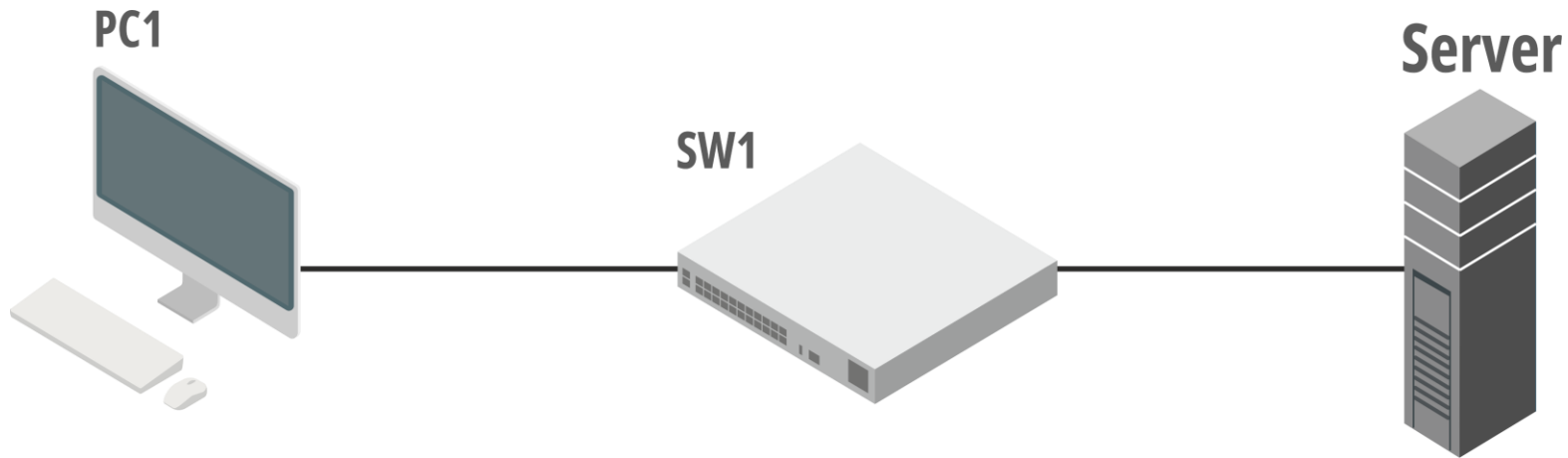


```
MES2424(config)#ip dhcp snooping
MES2424(config)#ip arp inspection
MES2424(config)#ip arp inspection vlan 100
MES2424(config)#vlan 100
MES2424(config-vlan)#vlan active
MES2424(config-vlan)#ip dhcp snooping
```

```
MES2424(config)#interface gigabitethernet 0/1
MES2424(config-if)#switchport mode access
MES2424(config-if)#switchport access vlan 100
```

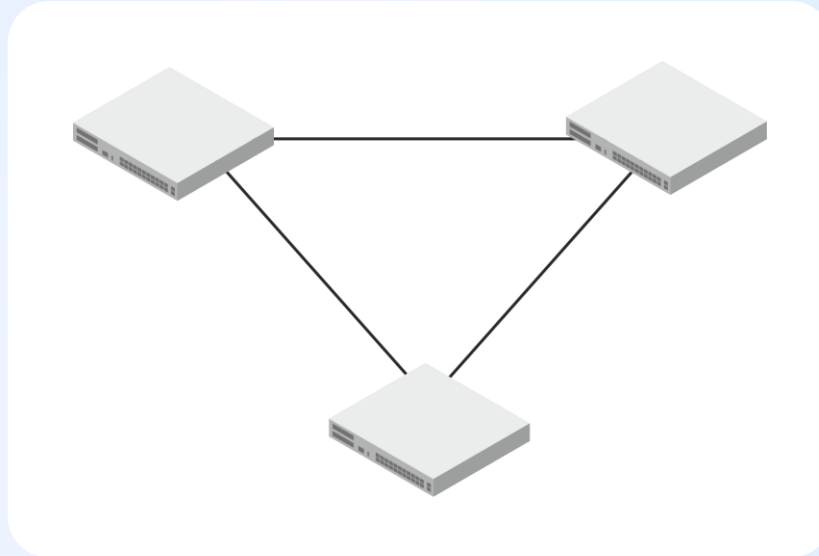
```
MES2424(config)#interface tengigabitethernet 0/1
MES2424(config-if)#switchport mode access
MES2424(config-if)#switchport access vlan 100
MES2424(config-if)#port-security-state trusted
MES2424(config-if)#set port-role uplink
```

DHCP-Server



```
MES2424(config)#ip dhcp server
MES2424(config)#ip dhcp pool 1 dhcp_pool
MES2424(dhcp-config)#network 20.20.20.5 /24 20.20.20.15
MES2424(dhcp-config)#lease 0 0 1
MES2424(dhcp-config)#default-router 20.20.20.1
MES2424(dhcp-config)#host hardware-address ec:b1:e0:7a:69:40 ip 20.20.20.13
MES2424(dhcp-config)#excluded-address 20.20.20.6 20.20.20.7
```

VRRP



```
MES2424(config)#vrrp enable
MES2424(config)#vlan 100
MES2424(config-vlan)#vlan active
MES2424(config-vlan)#name VRRP
```

```
MES2424(config)#interface vlan 100
MES2424(config-if)#ip address 10.10.10.2 /24
MES2424(config-if)#vrrp 1 ipv4 10.10.10.1
MES2424(config-if)#vrrp 1 priority 101
MES2424(config-if)#no vrrp 1 preempt
```

```
MES2424(config)#interface tengigabitethernet 0/1
MES2424(config-if)#switchport mode general
MES2424(config-if)#switchport general allowed vlan add 100
```

```
MES2424_2(config)#vrrp enable
MES2424_2(config)#vlan 100
MES2424_2(config-vlan)#name VRRP
MES2424_2(config-vlan)#vlan active
```

```
MES2424_2(config)#interface vlan 100
MES2424_2(config-if)#ip address 10.10.10.3 /24
MES2424_2(config-if)#vrrp 1 ipv4 10.10.10.1
MES2424_2(config-if)#vrrp 1 priority 99
MES2424_2(config-if)#no vrrp 1 preempt
```

```
MES2424_2(config)#interface tengigabitethernet 0/1
MES2424_2(config-if)#switchport mode general
MES2424_2(config-if)#switchport general allowed vlan add 100
```

OSPF



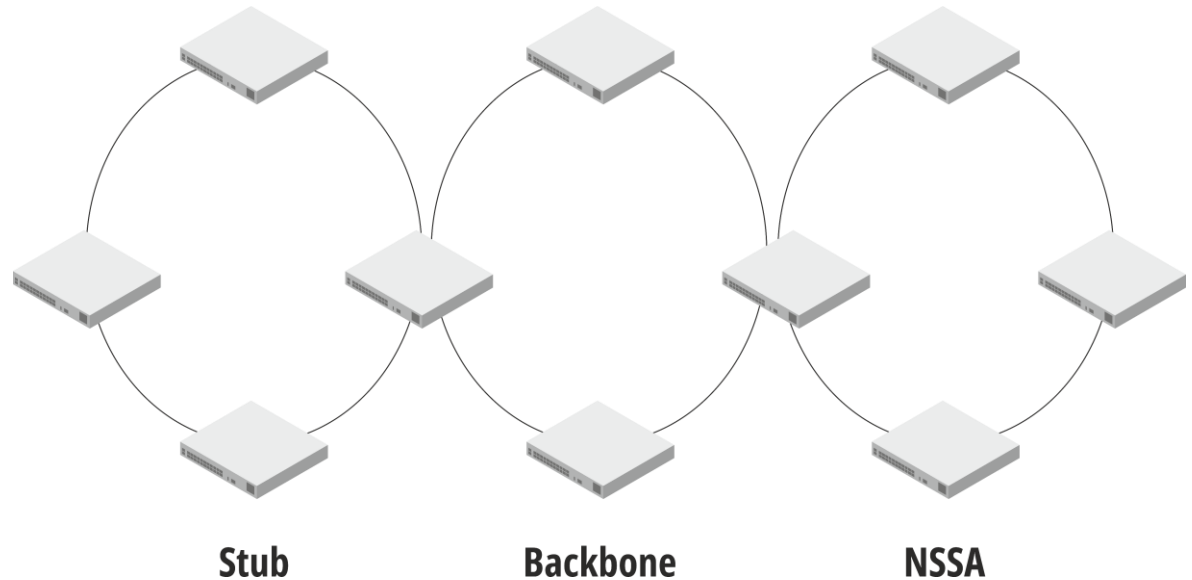
```
MES2424(config)#interface loopback 1
MES2424(config-if)#ip address 10.10.10.10 /32

MES2424(config)#vlan 10
MES2424(config-vlan)#name ospf_vlan
MES2424(config-vlan)#vlan active

MES2424(config)#interface vlan 10
MES2424(config-if)#ip address 192.168.1.1 /24
MES2424(config-if)#ip ospf network point-to-point

MES2424(config)#interface gigabitethernet 0/1
MES2424(config-if)#switchport mode general
MES2424(config-if)#switchport general allowed
vlan add 10

MES2424(config)#router ospf
MES2424(config-router)#router-id 10.10.10.10
MES2424(config-router)#network 192.168.1.1
area 0.0.0.0
MES2424(config-router)#redistribute connected
MES2424(config-router)#no shutdown
```





**Мы всегда готовы к диалогу, разработке
и доработке решений под ваше техническое задание**



630020, г. Новосибирск, ул. Окружная, 29В
09:00 – 18:00 (GMT+7)
Понедельник – пятница



+7 (383) 274-10-01, 274-48-48
eltex@eltex-co.ru; eltex-co.ru